

# SCI AUTOMATION

Newsletter Issue #10 | April 2018 | [www.sciplasma.com](http://www.sciplasma.com)

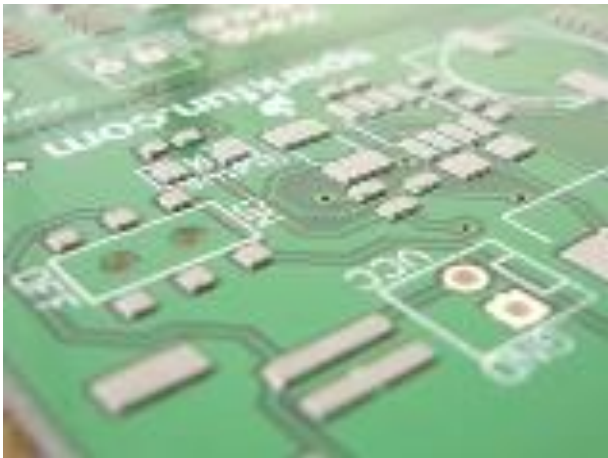


Dear Reader,

Presenting.... **ATLAS**! In Greek mythology, ATLAS was accepted as possessing immense strength and endurance, and that's what you will get in our ATLAS system. ATLAS is standalone batch plasma desmearing system, but it is also available as a plasma cleaning system.

ATLAS' configuration contains a multi-valve system with switching flow direction capability which guarantees optimal process homogeneity.

## ATLAS



- ATLAS can be used for:
- Large surface PCB
  - Able to handle fluorine-based gases
  - Plasma desmearing
  - Epoxy / Polyimide / Metal etching
  - Teflon activation and etching
  - General activation, cleaning and decontamination

## WHY USE THE ATLAS

- Up to 5 mass flow controlled gas lines.
- Customizable to vertical or horizontal tray layout.
- Full manual and automatic operation.
- Multistep processing up to 5 different process per setting cycle.

SCI provides inline, strip and batch systems for lead frames, substrates, wafers, and modules.

[View our products here!](#)

*West Point BizHub 210 Tuas South Ave 2 Singapore 63710*

*Tel: +65 6465 1886 | Fax: +65 6465 1887 | [sales@sciplasma.com](mailto:sales@sciplasma.com) | [marketing@sciplasma.com](mailto:marketing@sciplasma.com) | [www.sciplasma.com](http://www.sciplasma.com)*

*Unsubscribe [here](#)*